

The Rocky Ridge Review



Laura Ingalls Wilder - Rose Wilder Lane Home Association
3068 Highway A / Mansfield, MO 65704

Meet our staff...

Since the Wilder Home association was formed following Laura's death in 1957 many individuals have helped to continue her legacy. From the members of the board of directors to each staff member the dedication to historical accuracy and maintaining the home and possessions of the Wilders has not only been the mission, it has become the personal responsibility of everyone involved.

Long-time association member and tour guide, Ila McMinn, drives over 30 miles each way to get to work and her commitment to the Wilder Home is inspirational to visitors and is shared by all of the staff.

The newest staff member, Loren Day, has taken a genuine interest in the stories Laura wrote and has proven himself to be a loyal and devoted member of our team.

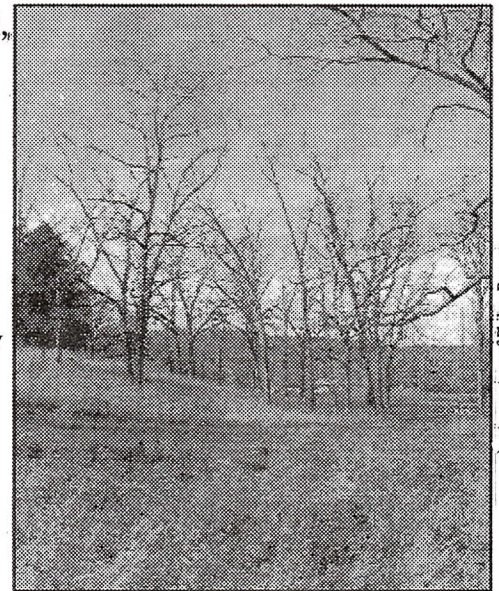
Each of these employees has read and re-reads the books to keep Laura's memories fresh in their minds. This knowledge of the books gives our visitors a unique and individual experience and everyone leaves with a wonderful memory and the feeling that they have just had a visit with Laura.

Portion of pathway between historic homes opens for Wilder Day

Visitors to the Wilder Home on Wilder Day, 2004 had an opportunity to walk in Laura's footsteps. The trail that Laura, Almanzo, and Rose used to go between the farmhouse and the Rock House was partially opened after the exhaustive efforts of association member Phillip Bennett. Phillip spent many hours measuring and walking the land between the homes to make a scholarly approximation of the trail, and has compiled his information into booklet form so anyone can experience "Laura's Pathway to Home."

The pathway extends from east of the historic farmhouse to the top of the hill. There are many scenic views along the trail and perfect photo opportunities for visitors.

The remainder of the trail is expected to be open by the end of the 2005 season.



Rocky Ridge farmhouse is just beyond this grove of walnut trees

Photo courtesy of Phillip Bennett

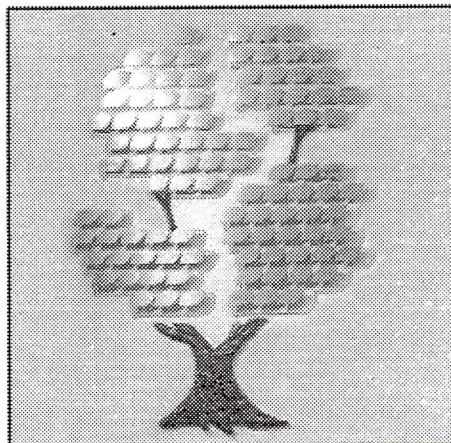


Photo courtesy of Gabel & Schaubert

The "Donor Recognition Tree," which showcases the support of each individual contributor to the new museum fund, continues to be a distinctive addition to the museum. With a \$200 donation an individual, corporation or group may have their name engraved on a leaf and become a part of Wilder Home history.